



UWMF Finance Committee

October 20, 2020, 7:00 - 8:30 AM

WebEx:

2cc

a

a

c

c

c a

IP.h7

Meeting Number: ngi Mnb FgCR//Password nigigi

Telephone: 1-415-655-0003//Access code: ngi Mnb FgCR

ddAh A=x/ I//P.=w IAP/1.AT4 A1/ 954P/h u51 1/u/1/=x/a 5xxA4.5=ATT S PI/ 954P/h
IAP/1.AT4 h5 =5P 1/uT/xP xIA=w/4 IAh/ 4I51PT E/u51/ 51 h 1.=w x5II.PP//
I//P.=w4a PI/ u TT x5II.PP// I.= P/4 A1/ PI/ 5uu.x.AT 1/x51h 5u u.=AT x5II.PP//
AxP.5=dd

UWMF Finance Committee - October 20, 2020 - Public Meeting Notice

Agenda

7:00 AM	<hr/> I. Call to Order Dr. Makeba Williams		
7:00 AM	<hr/> II. Meeting Minutes - Open Session Dr. Makeba Williams	Approval	
7:02 AM	<hr/> III. UWMF Financial Indicators for Month Ending September 30, 2020 Mr. Aaron Prochaska	Review/Discussion	
	Attachment - UWMF Financial Indicators for Month Ending September 30, 2020		Page 3
7:12 AM	<hr/> IV. UW Health Consolidated Financial Report - YTD September 30, 2020 Ms. Jodi Vitello	Update	
	Presentation - UW Health Consolidated Financial Report - YTD September 30, 2020 (Will Be Posted Prior to the Meeting)		Page 17
7:22 AM	<hr/> V. Closed Session (Materials Available To Members Only) Motion to enter into closed session pursuant to Wisconsin Statutes section 19.85(1)(e) for discussion of the following confidential strategic matters, which for competitive reasons require a closed session: review and approval of closed session minutes, discuss UWMF Fee Schedule 2021, and telemedicine reimbursement.		
8:20 AM	<hr/> VI. Return to Open Session		
8:21 AM	<hr/> VII. ACTION: UWMF Fee Schedule 2021 Dr. Makeba Williams/ Motion to endorse approval of UWMF Fee Schedule 2021 to the UWMF Board of Directors as discussed in closed session.	Endorsement	
8:30 AM	<hr/> VIII. Adjourn		



University of Wisconsin
Medical Foundation

Financial Indicators
As of September 30, 2020

UWMF Operating Activity YTD

As of September 30, 2020

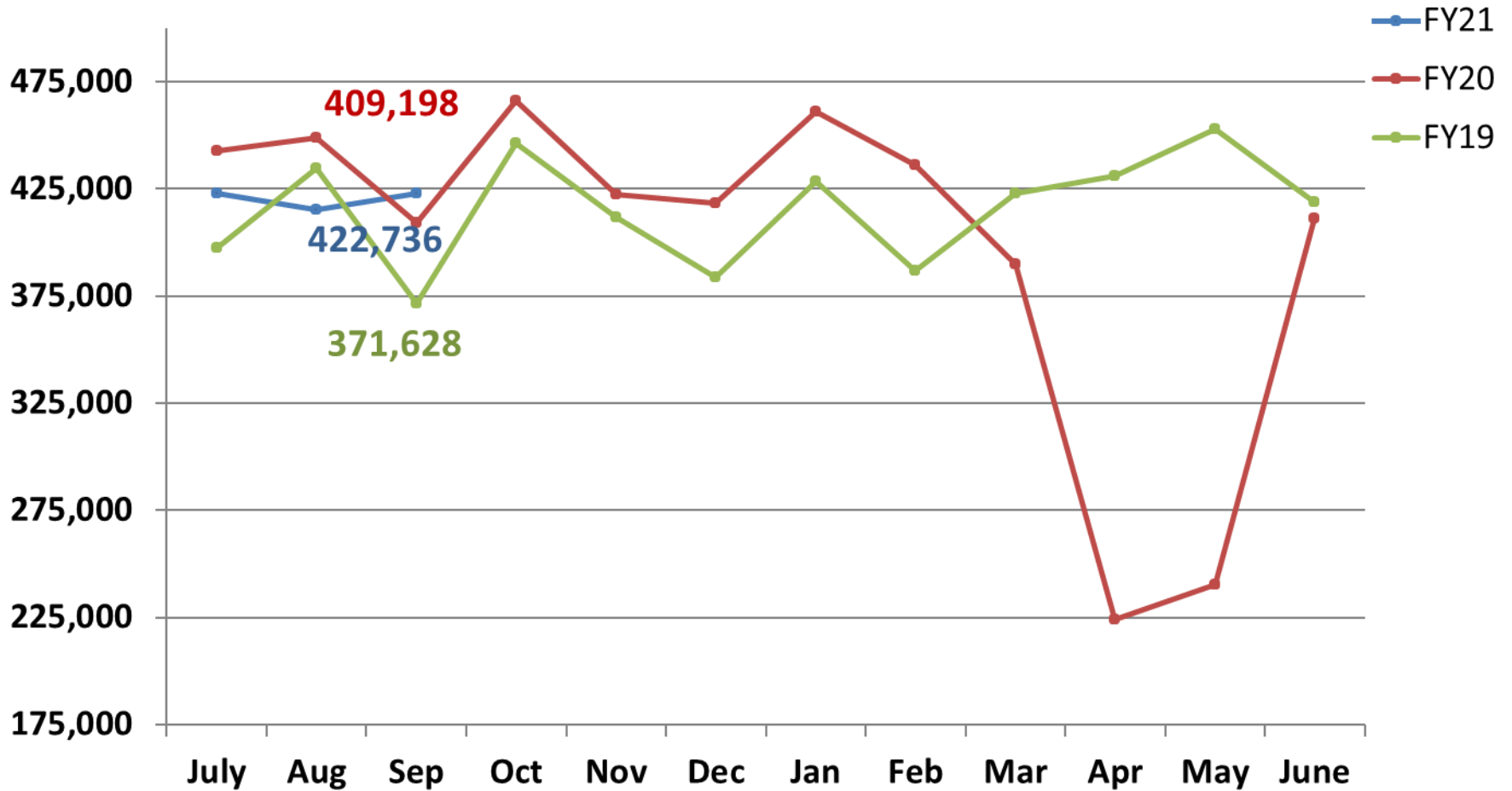
UWMF Operating Activity: YTD by Posting Period

	<u>FY19</u>	<u>FY20</u>	<u>Growth</u>	<u>FY21</u>	<u>Growth</u>
Avg Physician Count	1,465	1,489	1.6%	1,556	4.5%
Avg NonPhys Provider Count	595	644	8.2%	712	10.6%
Avg Provider Count	2,060	2,133	3.5%	2,268	6.3%
Total RWUs*	2,175	2,308	6.1%	2,243	-2.8%
Work RWUs*	1,204	1,301	8.1%	1,261	-3.1%
Charges*	\$518,644	\$580,415	11.9%	\$586,090	1.0%
Payments*	\$185,368	\$191,808	3.5%	\$194,881	1.6%
wRWUs / Physician	822	874	6.3%	810	-7.3%
Payment /Physician	\$126,531	\$128,817	1.8%	\$125,245	-2.8%
wRWUs / Provider	584	610	4.4%	556	-8.9%
Payment /Provider	\$89,984	\$89,924	-0.1%	\$85,926	-4.4%
Payment /Total RWU	\$85.23	\$83.11	-2.5%	\$86.88	4.5%

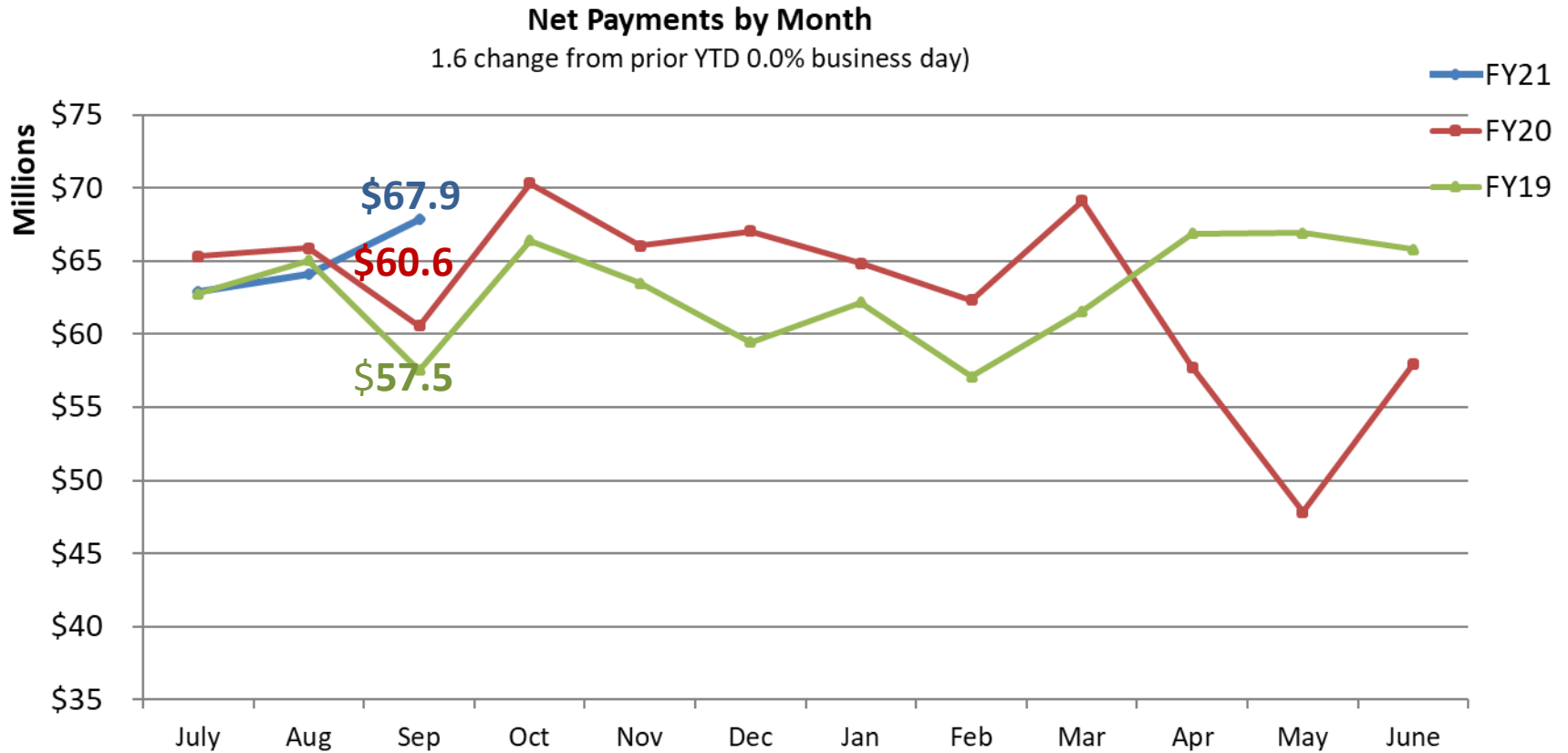
* in thousands

Work RVU's by Month

Work RVUS's by Month
-3.1% change from prior YTD (-4.6% per business day)



Net Payments by Month



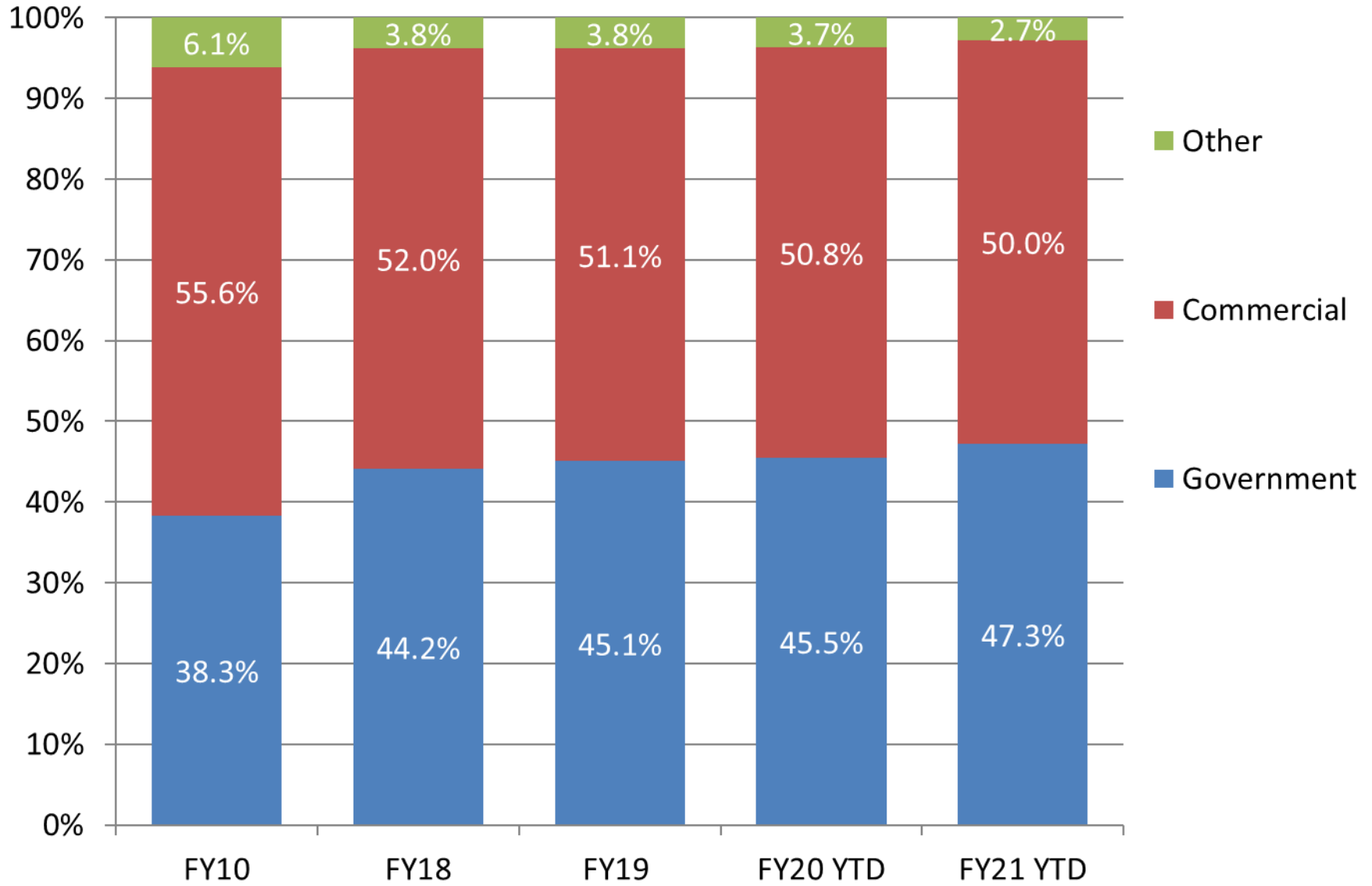
Footnote:

Collection Rate

	July	Aug	Sep	Oct	Nov	Dec	Jan	Feb	Mar	Apr	May	June
FY21		32.1%	33.5%	34.2%	0.0%	0.0%	0.0%	0.0%	0.0%	0.0%	0.0%	0.0%
FY20		33.1%	33.2%	32.8%	33.9%	35.6%	35.3%	30.9%	31.2%	37.2%	53.1%	43.4%
FY19		36.1%	35.0%	36.2%	33.9%	35.9%	35.7%	32.5%	32.8%	33.0%	34.8%	33.1%

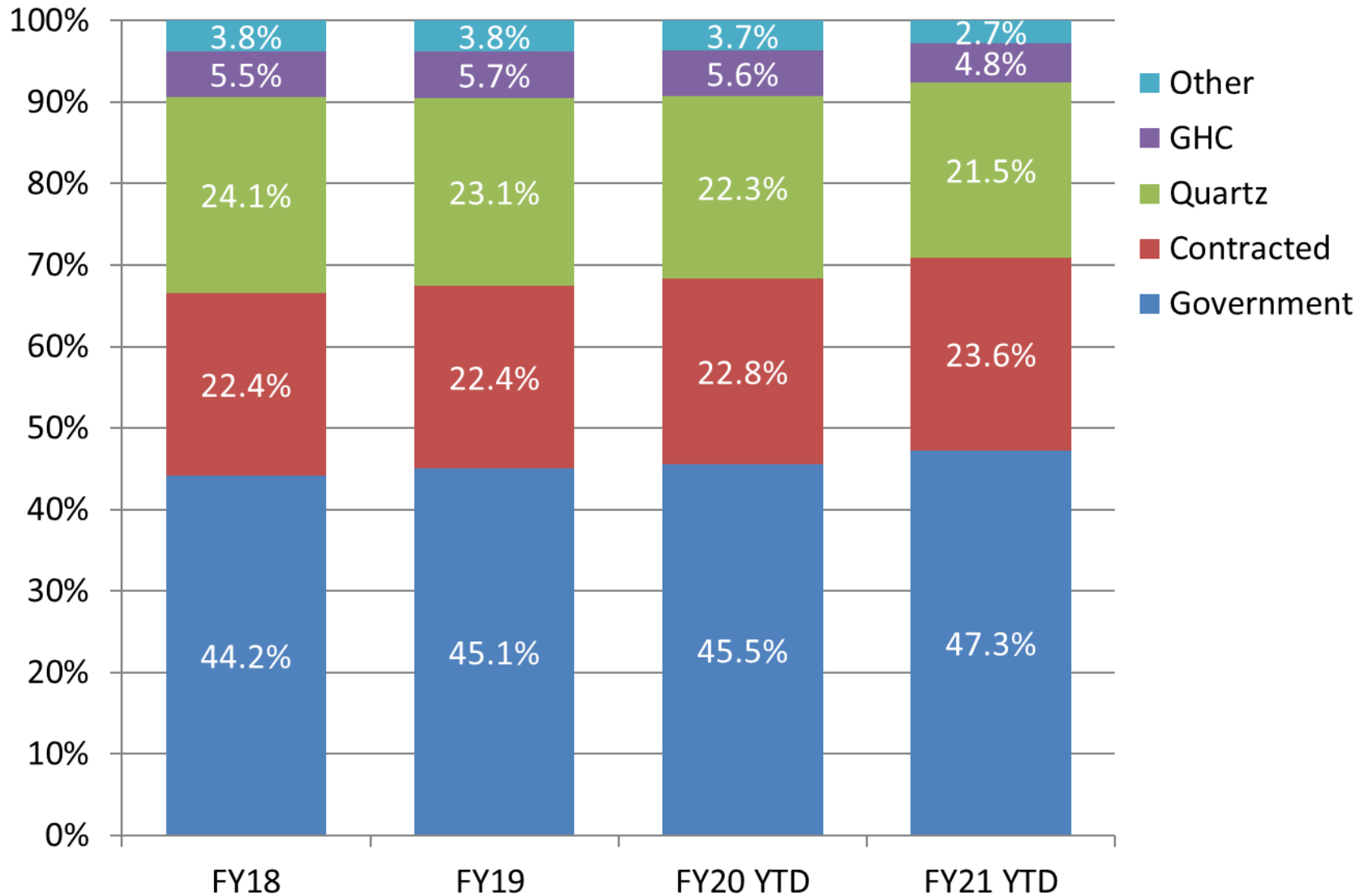
Note: Collection rate as a point in time since charges collected in future months

Payer Mix Trends by Month



Represents gross charges.

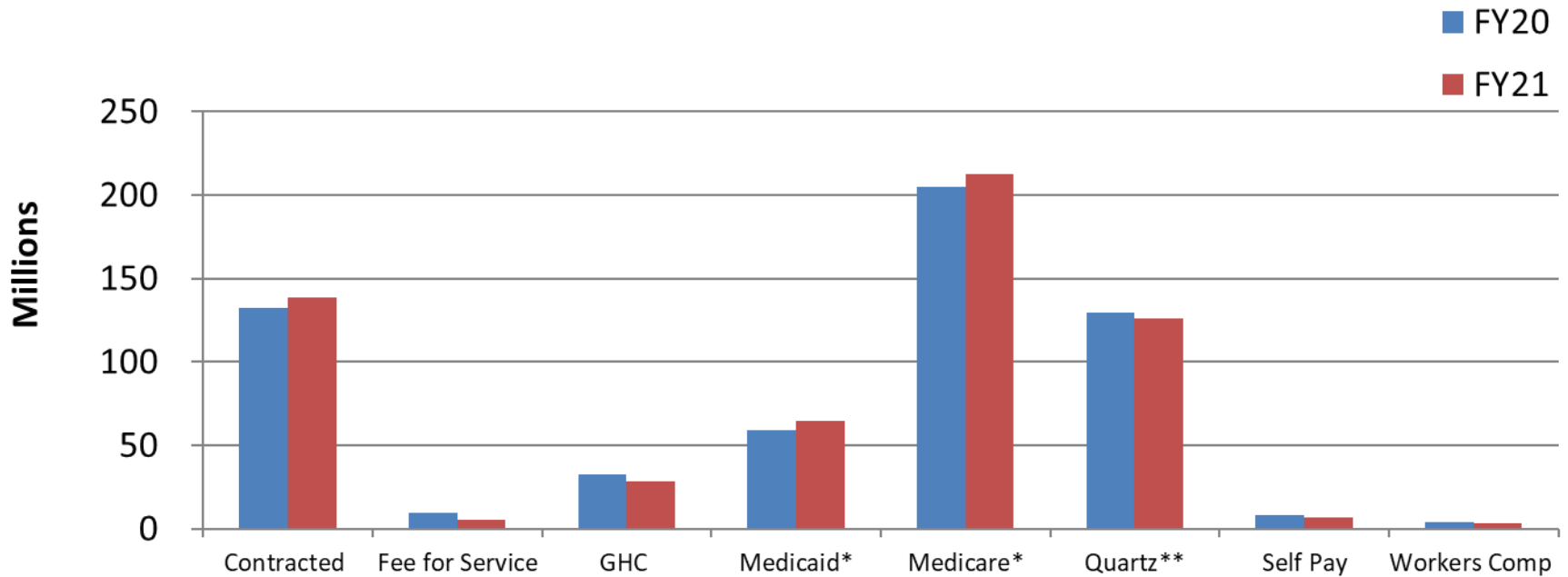
Payer Mix Trends – Commercial Breakdown



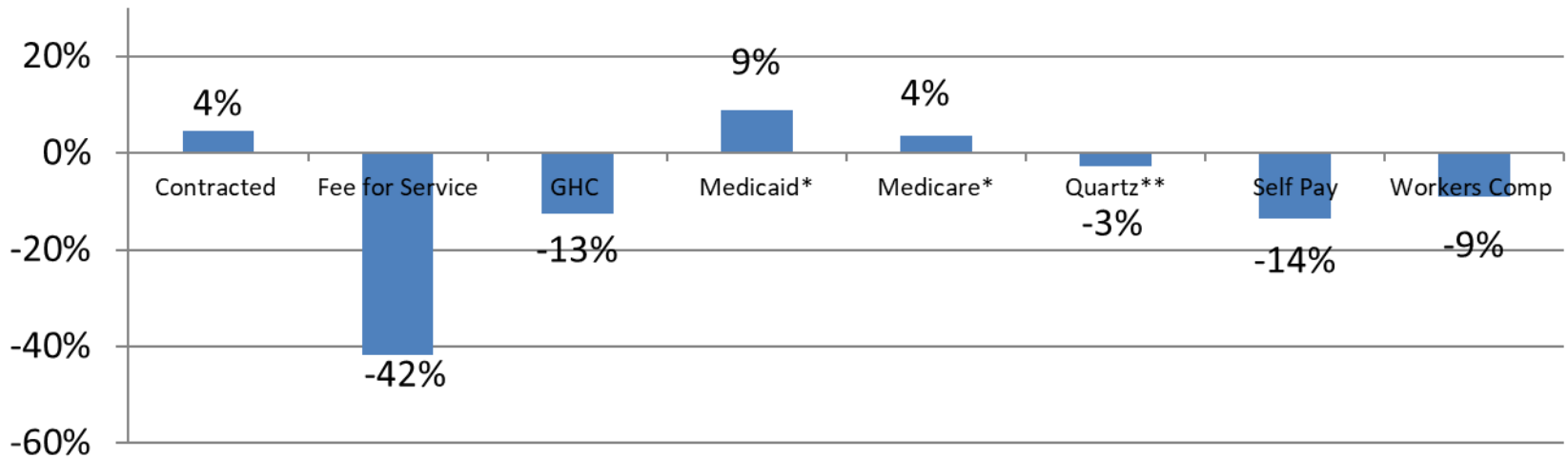
Represents gross charges.

*Quartz includes historical PPIC and Unity data.

Payer Mix Trends – Gross Charges by Payer – YTD Comparison



Percent Change: 1.0% UWMF Total (-0.6% per business day)



*Includes activity from government and commercial plans

**Quartz includes historical PPIC and Unity data.



University of Wisconsin
Medical Foundation

Financial Statements
As of September 30, 2020

Summary of YTD September 30, 2020 Preliminary Operating Results

	Actual Sep_YTD- FY21	Budget Sep_YTD- FY21	Variance vs. Budget	Var. % vs. Budget	Actual Sep_YTD- FY20	Variance vs. PY	Var. % vs. PY
<u>TOTAL OPERATING REVENUE</u>							
Net patient service revenue	201,150,507	214,041,795	(12,891,288)	(6)	198,178,098	2,972,409	1
Other operating revenues	3,947,328	1,487,822	2,459,506	165	1,442,676	2,504,652	174
Total operating revenues, net	205,097,834	215,529,616	(10,431,782)	(5)	199,620,774	5,477,061	3
<u>TOTAL OPERATING EXPENSES</u>							
Non-physician salaries and benefits	79,075,265	83,531,900	4,456,636	5	71,699,380	(7,375,885)	(10)
Physician salaries and benefits	117,518,236	123,864,552	6,346,317	5	108,775,688	(8,742,547)	(8)
Salaries and benefits	196,593,500	207,396,453	10,802,952	5	180,475,068	(16,118,432)	(9)
Other expenses	5,594,999	7,551,412	1,956,412	26	10,196,205	4,601,205	45
Purchased services and agency costs	(27,040,102)	(23,913,666)	3,126,436	(13)	(26,334,400)	705,702	(3)
Medical materials and supplies	1,811,372	2,588,231	776,860	30	1,387,161	(424,211)	(31)
Pharmaceuticals	12,354,508	12,461,061	106,552	1	10,362,686	(1,991,822)	(19)
Interest expense	9,488	71,786	62,298	87	93,343	83,855	90
Depreciation and amortization	1,439,116	1,389,572	(49,545)	(4)	1,761,648	322,531	18
Facilities and equipment	12,580,530	7,112,991	(5,467,539)	(77)	6,012,494	(6,568,036)	(109)
Nonoperating expenses - academic support	12,685,720	11,690,205	(995,515)	(9)	12,902,112	216,391	2
Net Operating Expenses	216,029,132	226,348,044	10,318,912	5	196,856,317	(19,172,815)	(10)
Income from operations	(10,931,298)	(10,818,428)	(112,870)	(1)	2,764,456	(13,695,754)	(495)
<u>NON-OPERATING REVENUE/EXPENSES</u>							
Net increase/decrease in fair value of investments	6,491,366	-	6,491,366	-	482,610	6,008,756	1,245
Investment income	1,064,809	1,430,650	(365,841)	(26)	1,424,204	(359,395)	(25)
Equity interest in income/loss of joint ventures	559,826	991,100	(431,273)	(44)	1,647,368	(1,087,541)	(66)
Other, net	491,368	174,546	316,822	182	295,196	196,172	66
Net Non Operating Revenue/Expenses	8,607,369	2,596,296	6,011,073	232	3,849,378	4,757,991	124
Net Profit	(2,323,929)	(8,222,132)	5,898,203	72	6,613,834	(8,937,763)	(135)

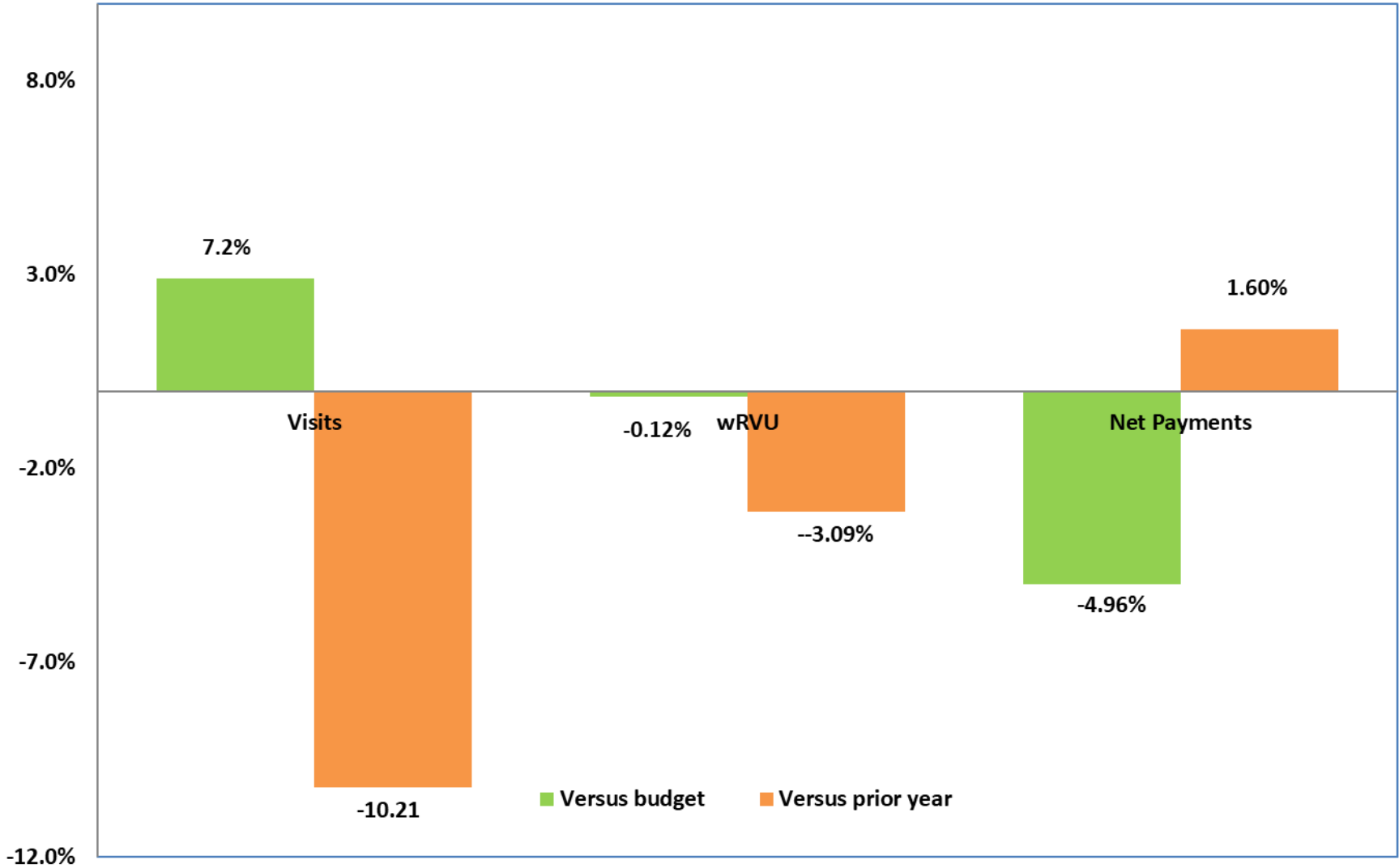


University of Wisconsin
Medical Foundation

Appendix

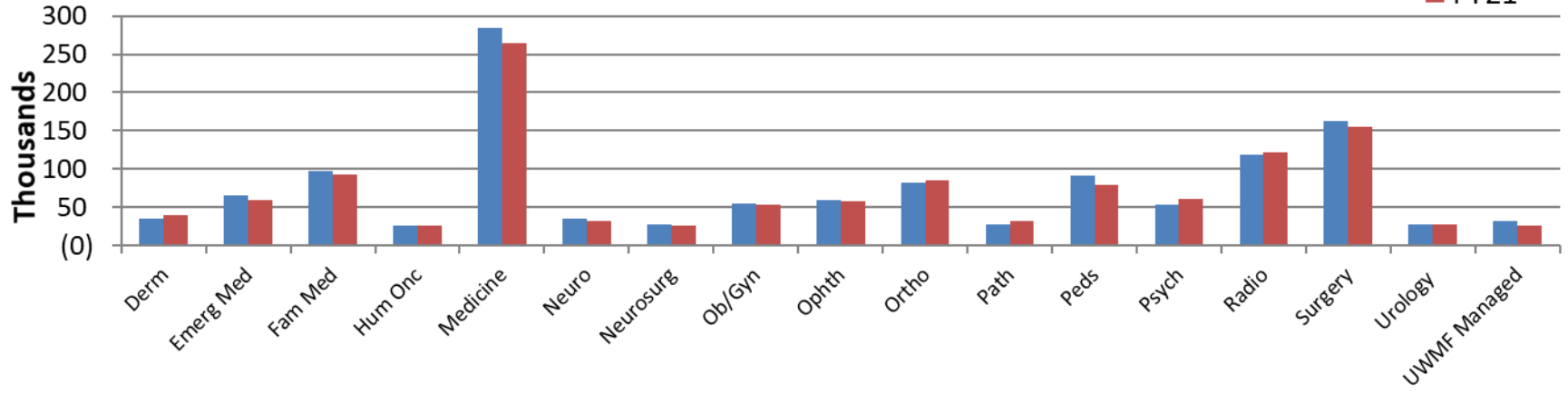
As of September 30, 2020

Visits, wRVUs and Payments FY21 September

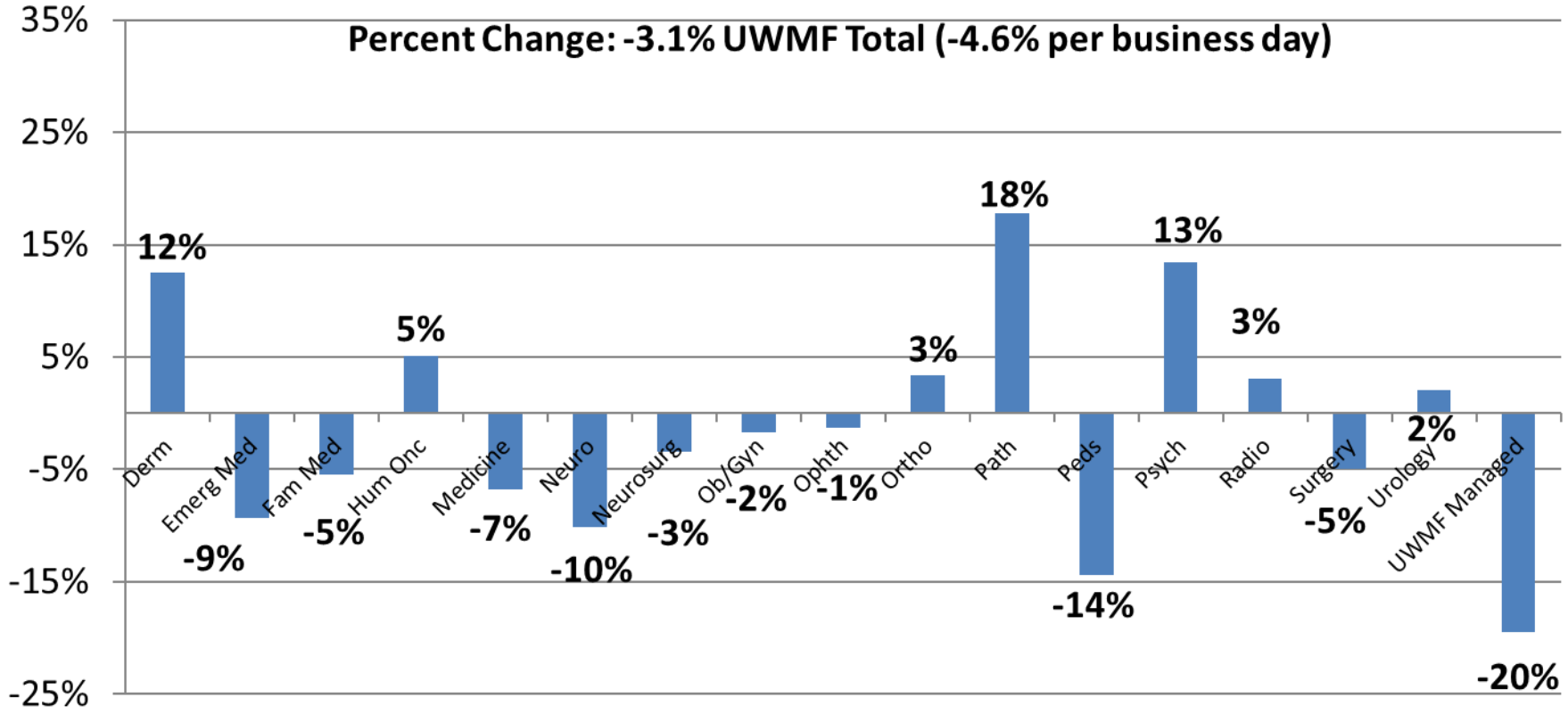


Work RVUs by Department – YTD Comparison

FY20
FY21

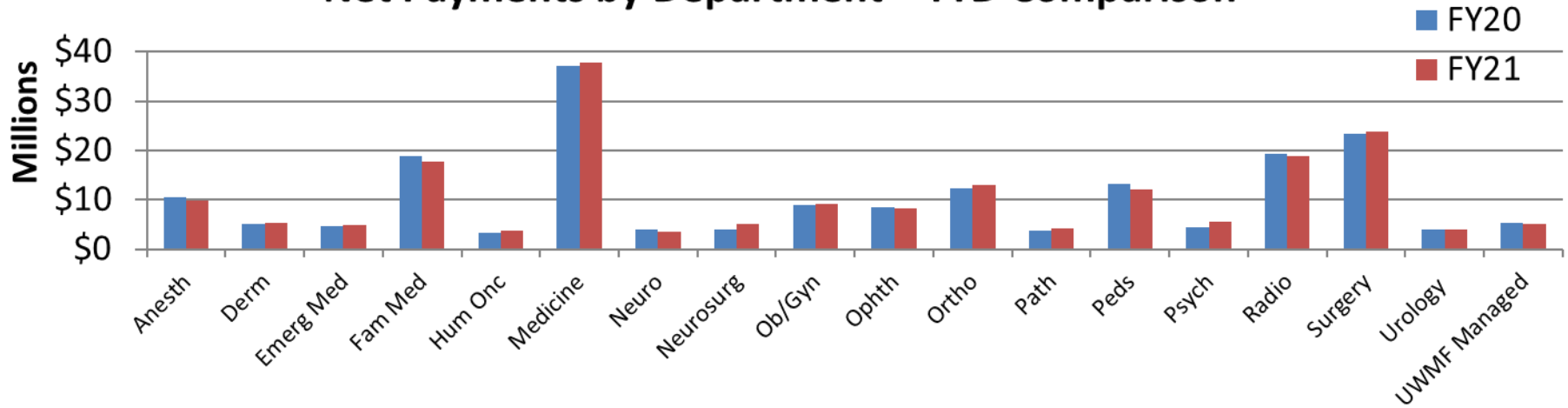


Percent Change: -3.1% UWMF Total (-4.6% per business day)

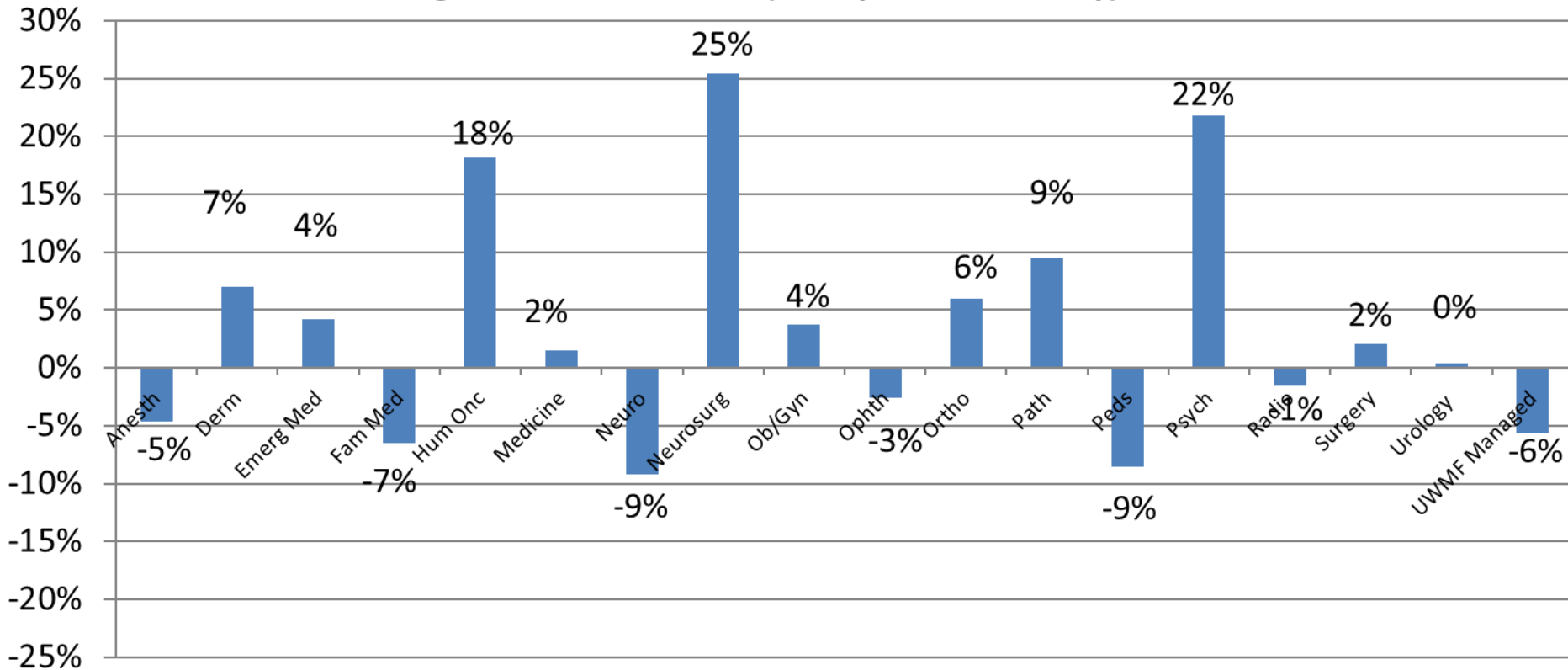


* UWMF Managed includes Urgent Care and Welcome Center Providers

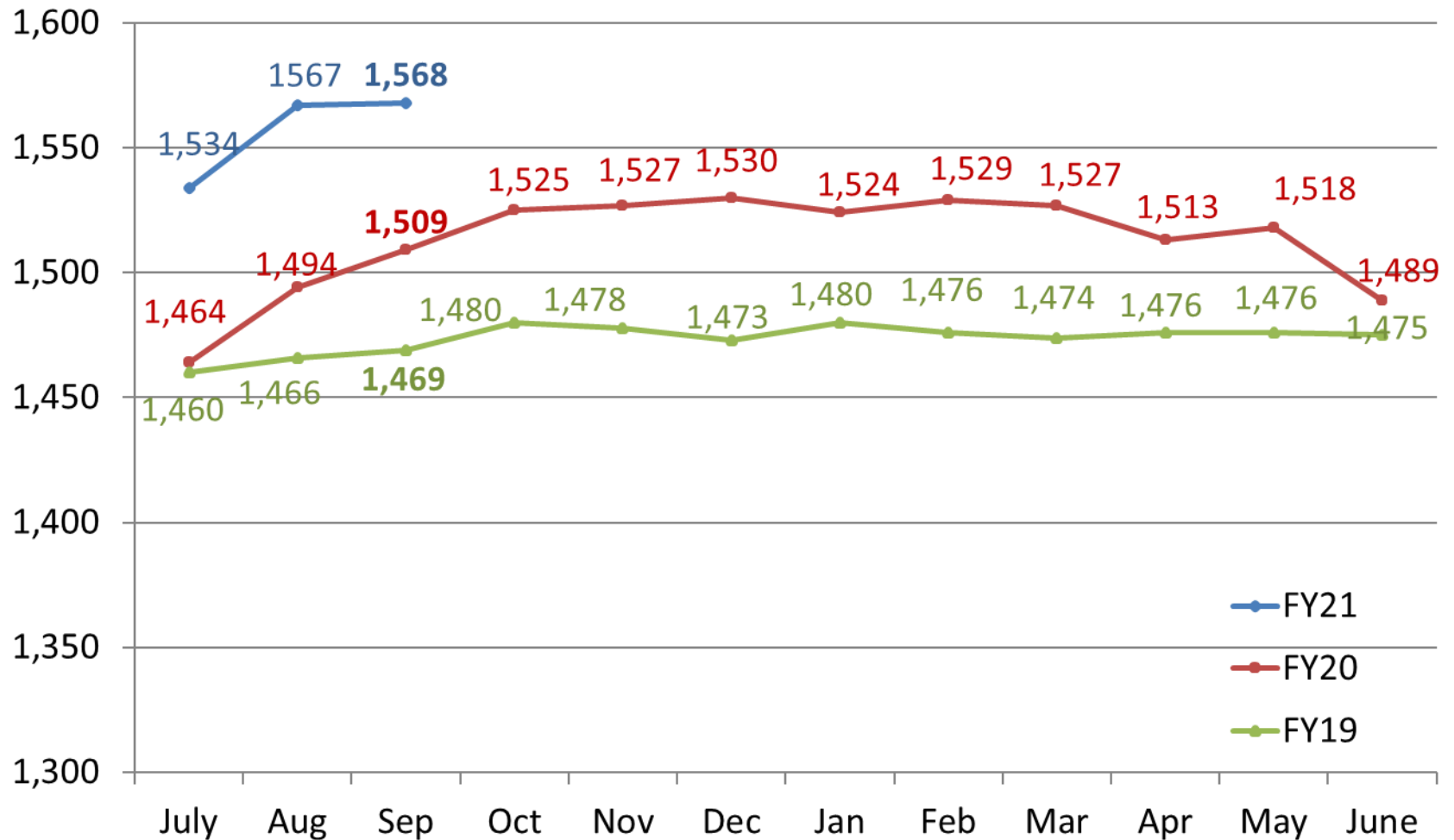
Net Payments by Department – YTD Comparison



Percent Change: 1.6% UWMF Total (0.0% per business day)



Physician Head Count by Month



The logo for UW Health, featuring the letters 'UW' in red and 'Health' in blue, set against a white background with a faint hexagonal grid pattern.

UW Health

Presentation

Will Be Added Prior to the Meeting